

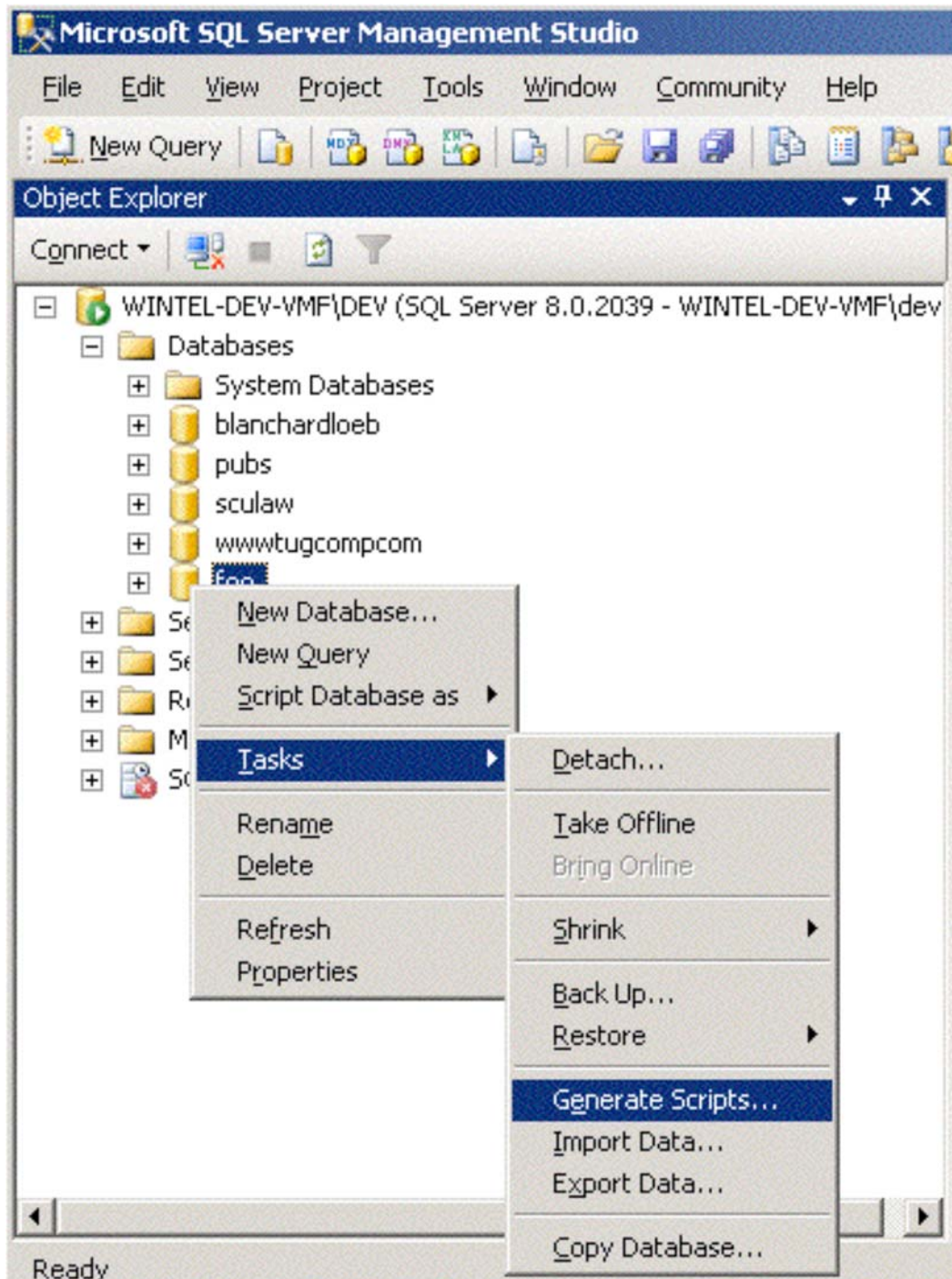
SQL Server 2005 Data Transfer Services (DTS) work around

STEP 1 – generate the SQL query to create the tables.

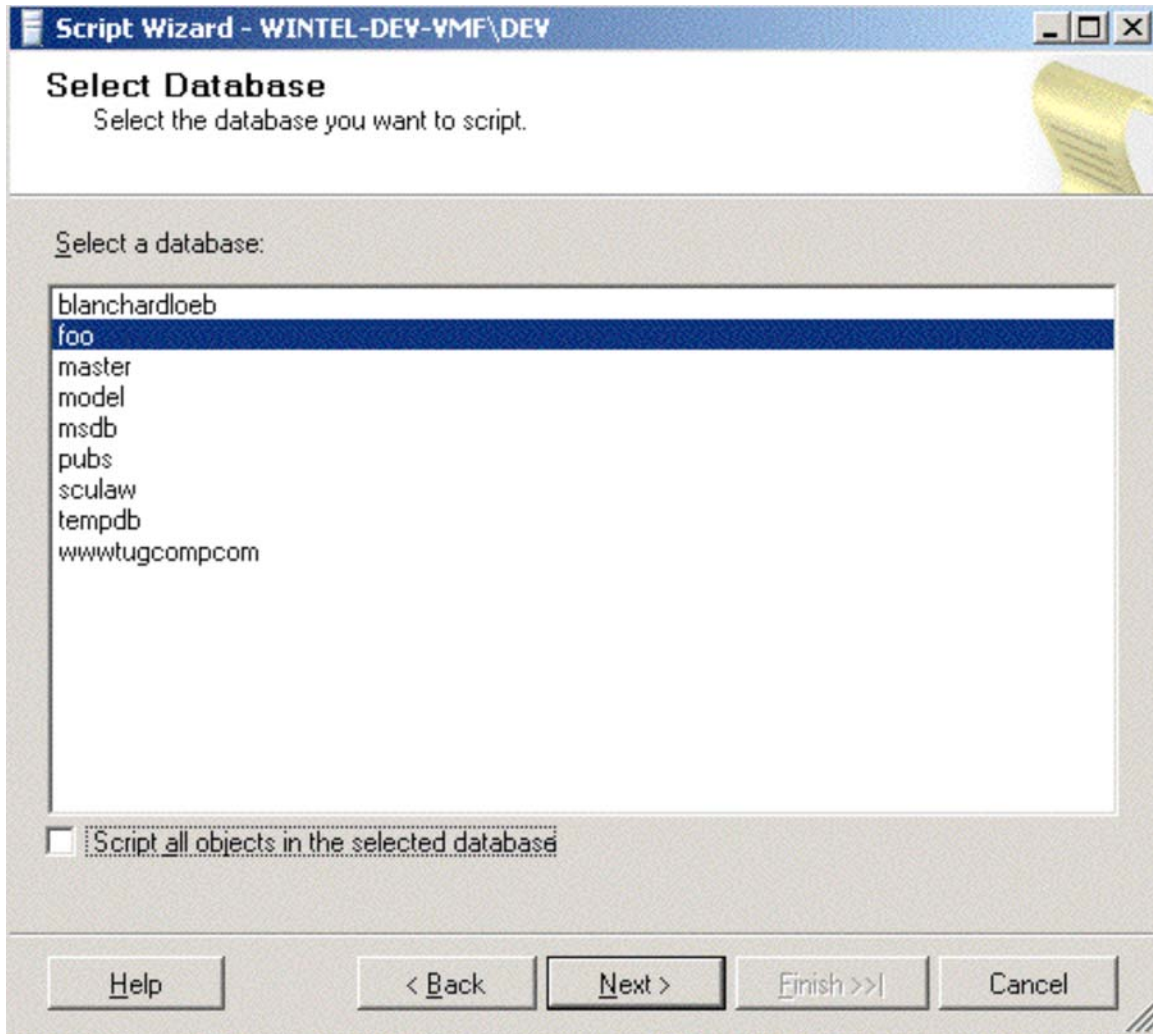
1. Launch SQL Server 2005 Management Studio
2. Connect to your SOURCE database and login



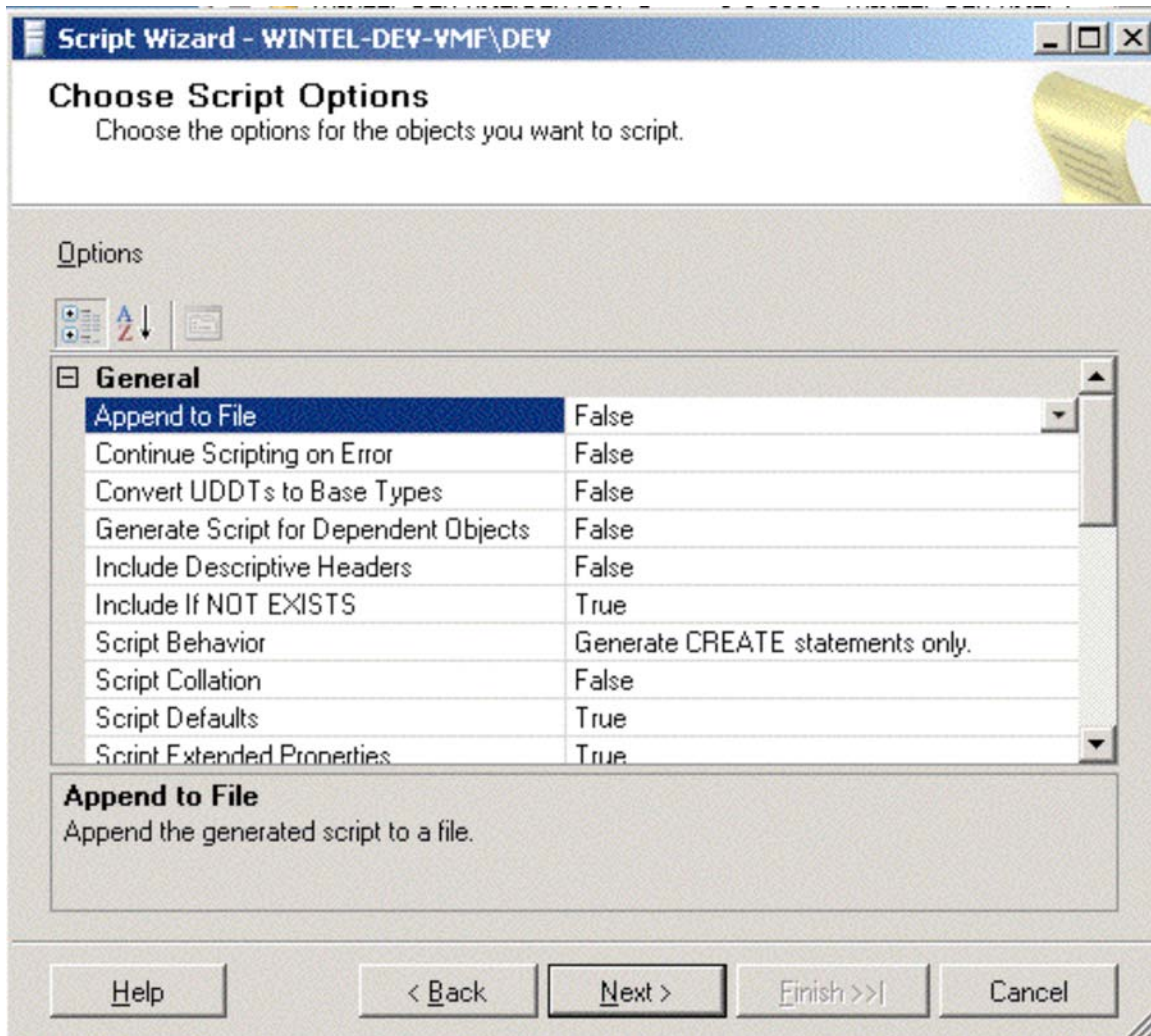
3. Right-click on your database, choose Tasks, then choose Generate Scripts



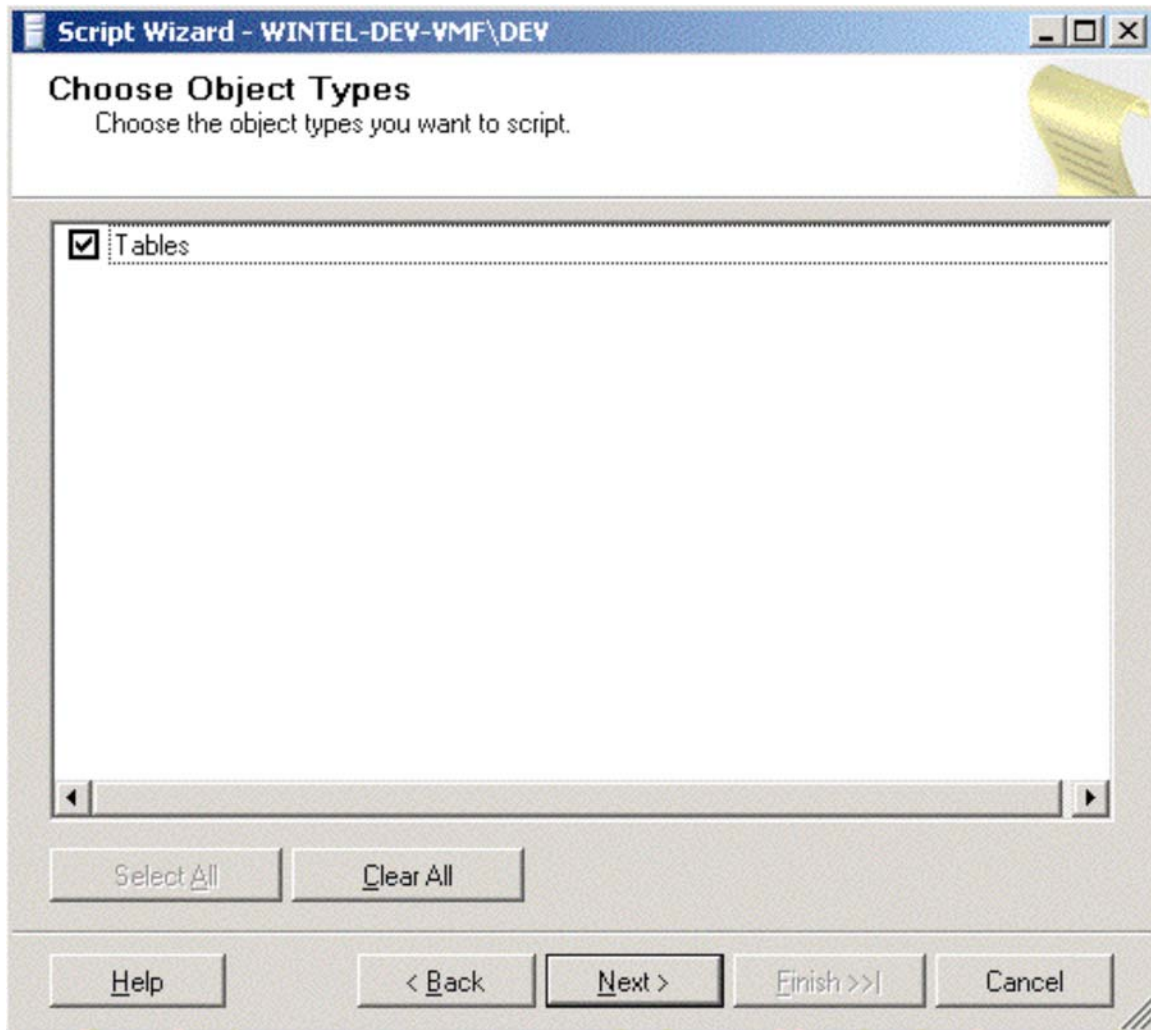
4. The Script Wizard window will open up. Select your database and click next



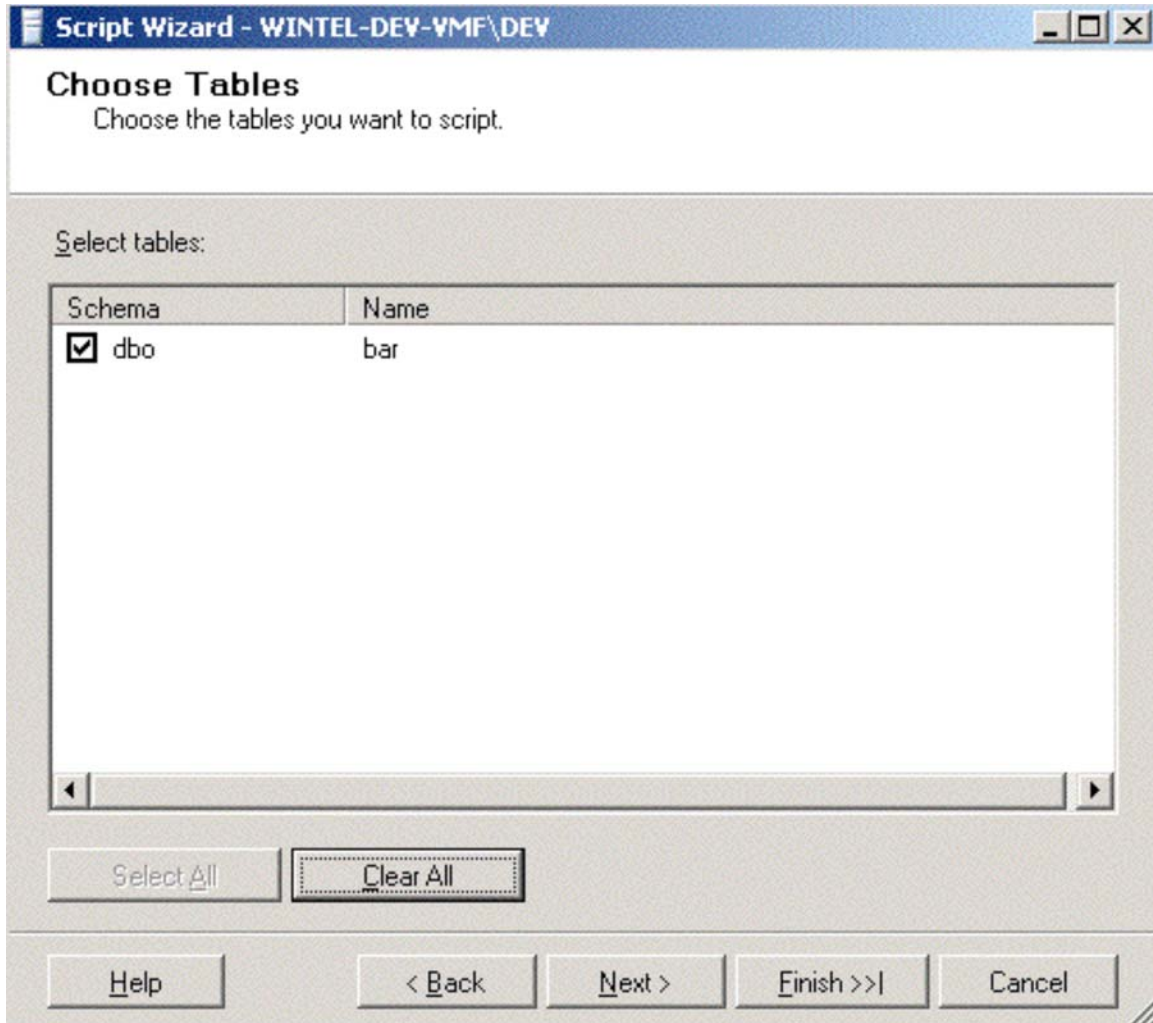
5. The next screen is the SCRIPT OPTIONS. You can modify these if necessary. Click the NEXT button.



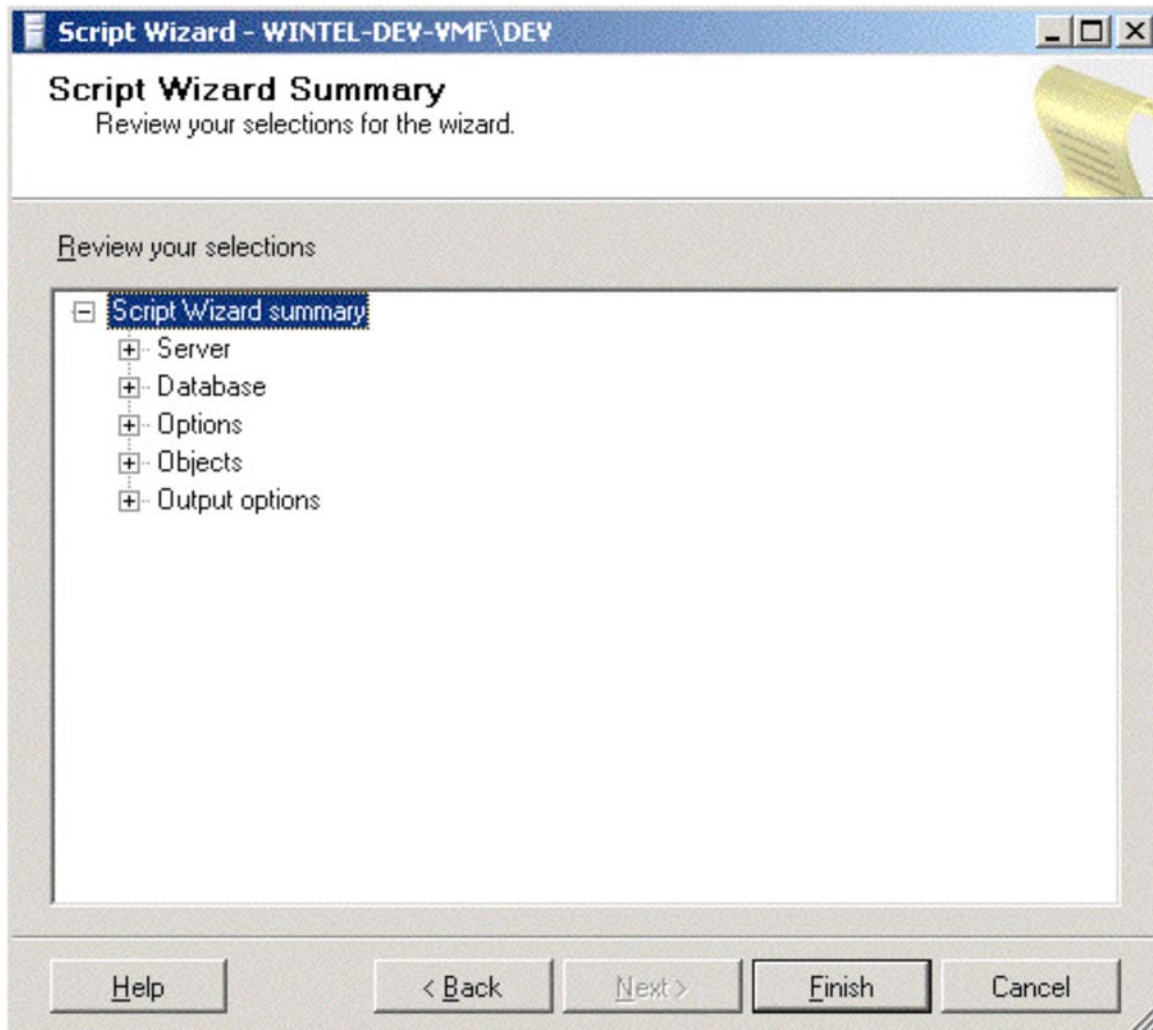
6. The next screen is OBJECT TYPES. Checkbox TABLES and click the next button.



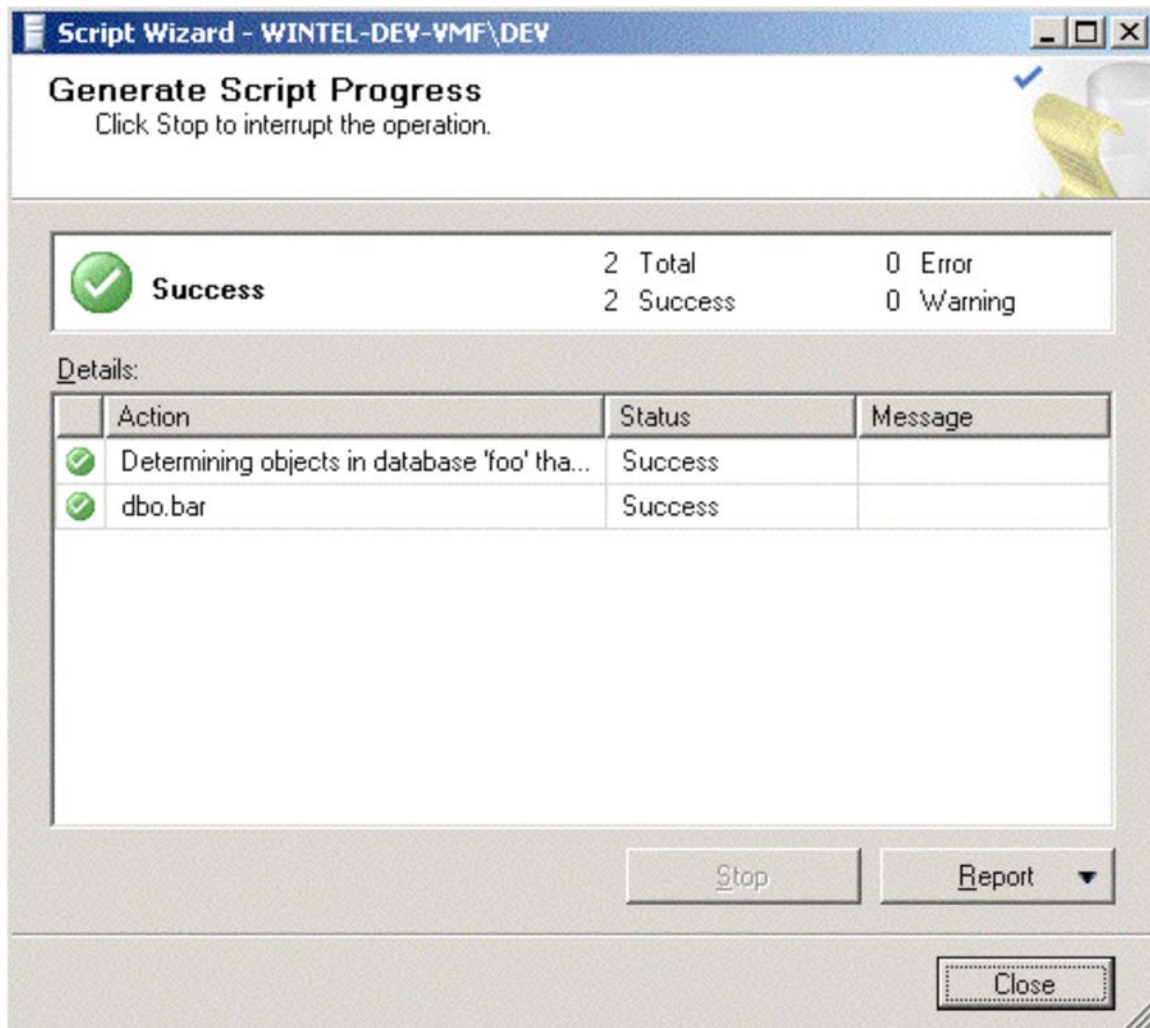
7. The next screen is CHOOSE TABLES. Checkbox all the tables you want to create and click the FINISH button



8. The next screen is the SCRIPT WIZARD SUMMARY, you can click the FINISH button.



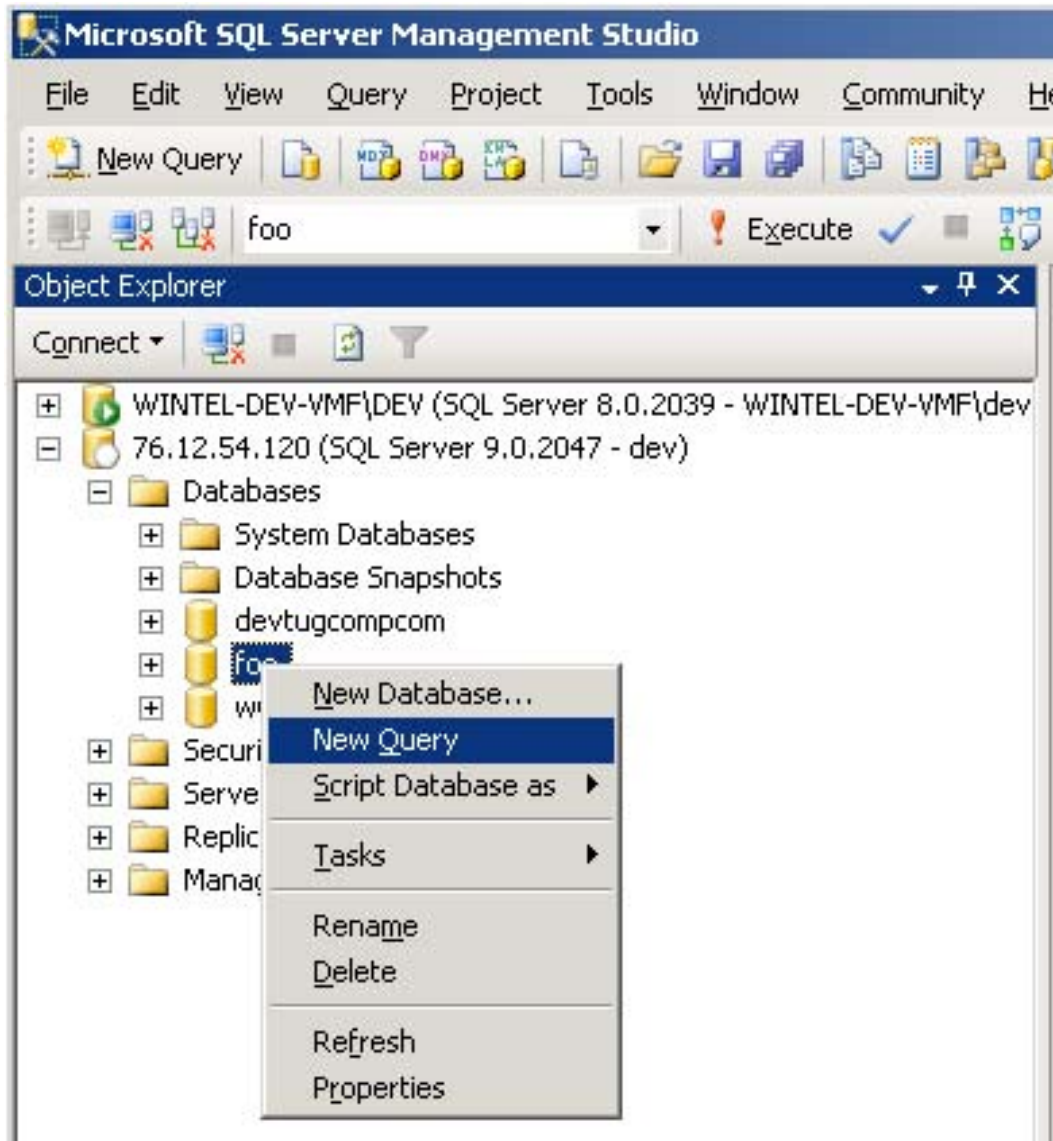
9. A success screen will now display, click the CLOSE button.



10. Great, a new Query Window should be open with code to create your tables on your remote server.

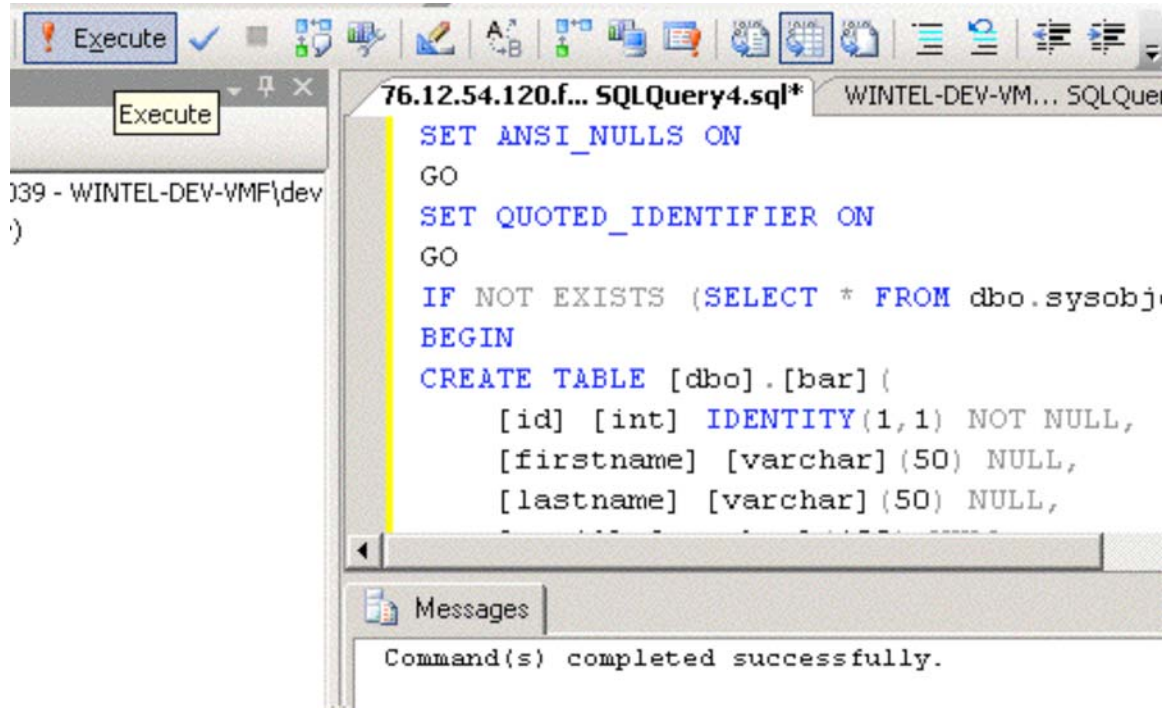
STEP 2 – Connect to your Remote Database running SQL Server 2005

1. You should still be in SQL Server 2005 Management Studio
2. Connect to your **DESTINATION** database.
3. Right click the database and choose New Query.



4. Go back to your original query from your Source Database and copy it.
5. Paste the SQL statement into your New Query window for your destination database.

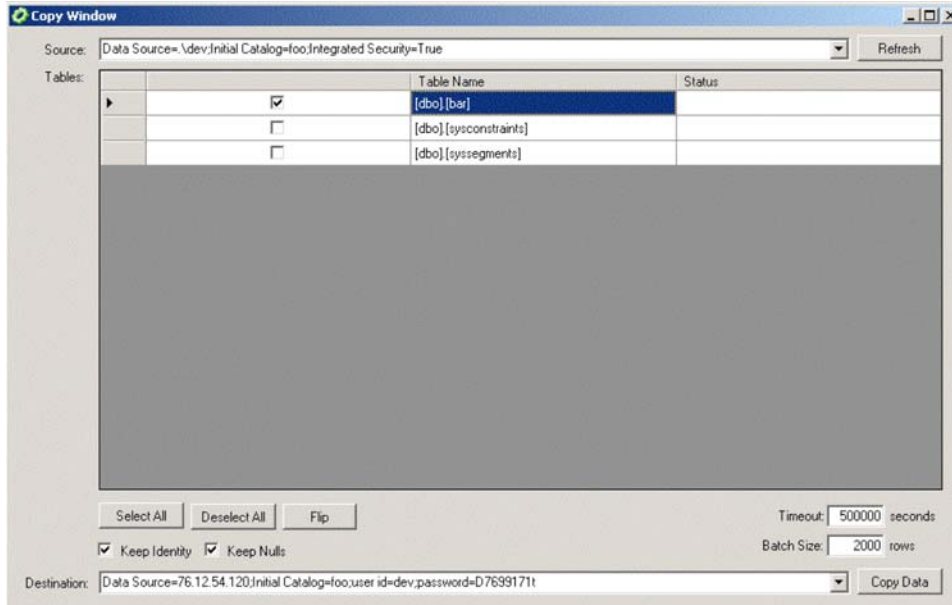
6. Click the Execute button. You should see the message "Command(s) completed successfully"



STEP 3 – Install and Launch **Simple SQL Bulk Copy**

You can download this great utility here.

<http://projects.c3o.com/files/3/plugins/entry11.aspx>



1. Setup the **SOURCE**

- Data Source=.\dev; (**the local database and Windows Login Name**)
- Initial Catalog=foo; (**the database name**)
- Integrated Security=True

2. Setup the **DESTINATION**

- Data Source=76.12.55.10 (**the IP address for my remote server**)
- Initial Catalog=foo; (**the database name**)
- user id=mysqluser; (**the SQL Login Name**)
- password= foopassword (**the SQL Login Password**)

Here is what the final source and destination looks like.

Data Source=.\dev;Initial Catalog=foo;Integrated Security=True

Data Source=76.12.55.10;Initial Catalog=foo;user id=mysqluser;password=foopassword